



National  
Qualifications  
2025

**X804/76/11**

**Art and Design**

MONDAY, 26 MAY  
9:00 AM – 11:00 AM

---

**Total marks — 60**

**SECTION 1 — EXPRESSIVE ART STUDIES — 30 marks**

Attempt Question 1 and TWO other questions.

**SECTION 2 — DESIGN STUDIES — 30 marks**

Attempt Question 7 and TWO other questions.

Write your answers clearly in the answer booklet provided. In the answer booklet you must clearly identify the question number you are attempting.

You may use sketches to illustrate your answers.

Use **blue** or **black** ink.

Before leaving the examination room you must give your answer booklet to the Invigilator; if you do not, you may lose all the marks for this paper.



\* X 8 0 4 7 6 1 1 \*

## SECTION 1 — EXPRESSIVE ART STUDIES — 30 marks

Attempt this question.

1. Select **one artwork** you have studied.

With reference to this one artwork, explain the:

- *artist's use of materials and/or technology*
- *artist's consideration of style*
- *impact of social, cultural and/or other influences.*

10

## SECTION 1 — EXPRESSIVE ART STUDIES (continued)

Attempt TWO questions from Q2, Q3, Q4, Q5 or Q6.

Image for Q2



*The Gift* (2010) by Janet Rickus  
oil paint on panel (36 × 46 cm)

2. Analyse the following elements of this painting:

- *colour*
- *composition*
- *subject matter.*

You must fully justify each point you make.

10

[Turn over

## SECTION 1 — EXPRESSIVE ART STUDIES (continued)

Image for Q3



*Spray* (1939) by Harold Williamson  
oil paint on canvas (61 × 86 cm)

3. Analyse the following elements of this painting:

- *mood and atmosphere*
- *texture*
- *viewpoint.*

You must fully justify each point you make.

10

## SECTION 1 — EXPRESSIVE ART STUDIES (continued)

Image for Q4



*Edinburgh (from Salisbury Crags)* (c. 1927) by William Crozier  
oil paint on canvas (71 × 92 cm)

4. Analyse the following elements of this painting:

- *setting*
- *shape*
- *tone.*

You must fully justify each point you make.

10

[Turn over

## SECTION 1 — EXPRESSIVE ART STUDIES (continued)

Images for Q5



*Your Next Breath* (2022) by Kenny Hunter  
bronze (life-size)

5. Analyse the following elements of this sculpture:

- *form*
- *pose*
- *subject matter.*

You must fully justify each point you make.

10

## SECTION 1 — EXPRESSIVE ART STUDIES (continued)

Image for Q6



*Self Portrait* (2016) by Kerry James Marshall  
acrylic paint on panel (48 × 44 cm)

6. Analyse the following elements of this painting:

- *focal point*
- *pattern*
- *techniques.*

You must fully justify each point you make.

10

## SECTION 2 — DESIGN STUDIES — 30 marks

Attempt this question.

7. Select **one design** you have studied.

With reference to this one design, explain the:

- *designer's use of techniques*
- *designer's consideration of target market/audience*
- *impact of social, cultural and/or other influences.*

10

## SECTION 2 — DESIGN STUDIES (continued)

Attempt TWO questions from Q8, Q9, Q10, Q11 or Q12.

Images for Q8



*Zhuhai Opera House, China (2017) by Chen Keshi*

Materials: steel, glass, LED lighting

8. Analyse the following elements of this architectural design:

- *aesthetics*
- *form*
- *location.*

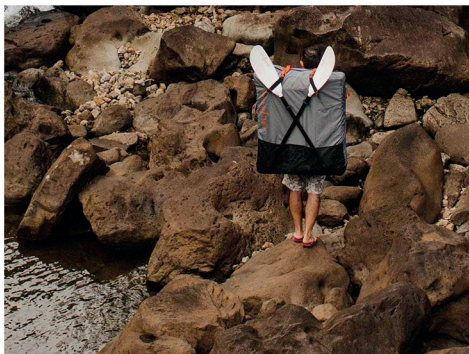
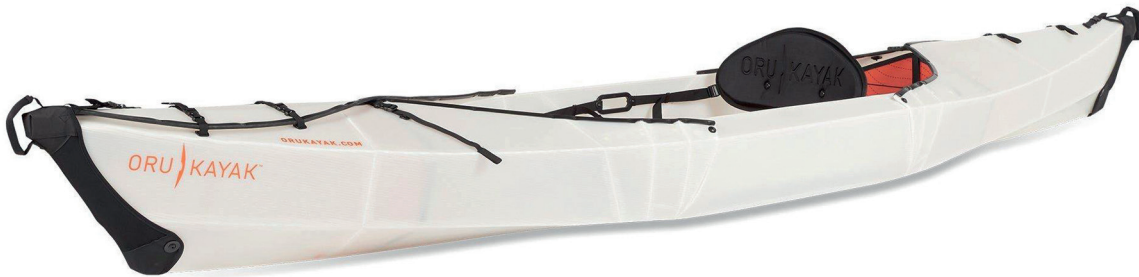
You must fully justify each point you make.

10

[Turn over

## SECTION 2 — DESIGN STUDIES (continued)

Images for Q9



*Beach LT Origami Kayak (2021) by Oru Kayak*

Materials: double layered corrugated thermoplastic polymer, neoprene, canvas straps  
 unfolded (368 × 74 × 61 cm), folded (84 × 31 × 74 cm),  
 weight 11.3 kg

9. Analyse the following elements of this product design:

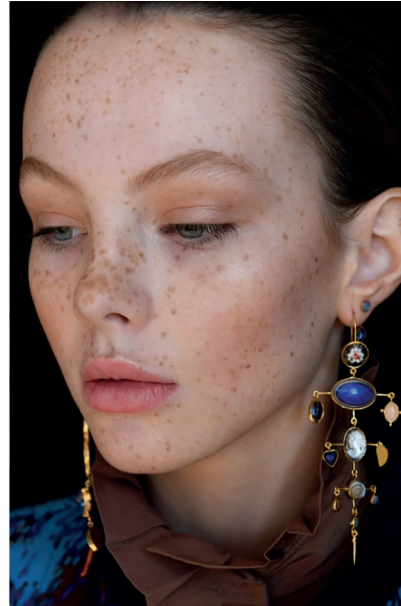
- *fitness for purpose*
- *materials*
- *target market.*

You must fully justify each point you make.

10

## SECTION 2 — DESIGN STUDIES (continued)

Images for Q10



*Victorian-Style Drop Earrings (c.2023) by Grainne Morton*

Materials: ethically sourced 18 carat gold-plated silver, recycled materials including antique enamel button and cameo, vintage semi-precious stones, mother of pearl, shell, and glass  
length 10 cm, width 4 cm

10. Analyse the following elements of this earring design:

- *colour*
- *materials*
- *scale.*

You must fully justify each point you make.

10

[Turn over

## SECTION 2 — DESIGN STUDIES (continued)

Image for Q11



*Amelia Fang and the Lost Yeti Treasures* (2019) by Laura Ellen Anderson

Book cover design

11. Analyse the following elements of this book cover design:

- *imagery*
- *layout*
- *typography.*

You must fully justify each point you make.

10

## SECTION 2 — DESIGN STUDIES (continued)

Image for Q12



*Fashion Shoes (17–18<sup>th</sup> century) by unknown designer, France*  
Materials: silk, leather

12. Analyse the following elements of this shoe design:

- *decoration*
- *target market*
- *wearability.*

You must fully justify each point you make.

10

[END OF QUESTION PAPER]

[BLANK PAGE]

DO NOT WRITE ON THIS PAGE

[BLANK PAGE]

DO NOT WRITE ON THIS PAGE

### *Acknowledgement of copyright*

- Section 1 Question 2 Painting - “The Gift” (2010) by Janet Rickus.  
**SQA has made every effort to trace the owners of copyright of this item and seek permissions. We are happy to discuss permission requirements and incorporate any missing acknowledgement. Please contact [question.papers@sqa.org.uk](mailto:question.papers@sqa.org.uk).**
- Section 1 Question 3 Painting - “Spray” (1939) by Harold Williamson. Reproduced by kind permission of Claire Broadhurst, Family of Harold Williamson.
- Section 1 Question 4 Painting - “Edinburgh (from Salisbury Crags)” (c. 1927) by William Crozier.  
**SQA has made every effort to trace the owners of copyright of this item and seek permissions. We are happy to discuss permission requirements and incorporate any missing acknowledgement. Please contact [question.papers@sqa.org.uk](mailto:question.papers@sqa.org.uk).**
- Section 1 Question 5 Four images - “Your Next Breath” (2022) by Kenny Hunter. Reproduced by permission of Kenny Hunter.
- Section 1 Question 6 Painting - “Self Portrait” (2016) by Kerry James Marshall.  
**SQA has made every effort to trace the owners of copyright of this item and seek permissions. We are happy to discuss permission requirements and incorporate any missing acknowledgement. Please contact [question.papers@sqa.org.uk](mailto:question.papers@sqa.org.uk).**
- Section 2 Question 8 (Image on top left) – Image of “Zhuhai Opera House” is taken from <https://www.archilovers.com/projects/233469/zhuhai-opera-house.html#images>.  
**SQA has made every effort to trace the owners of copyright of this item and seek permissions. We are happy to discuss permission requirements and incorporate any missing acknowledgement. Please contact [question.papers@sqa.org.uk](mailto:question.papers@sqa.org.uk).**
- Section 2 Question 8 (Image on top right) – Image of “Zhuhai Opera House” is taken from [https://themind-circle.com/zhuhai-opera-house-stunning-island-structure-in-china/?fbclid=IwY2xjawGj4JhleHRuA2FlbQlxMAABHaZDufXB3bfpjJnRA5igshbPPo515cN6P009jV48M2qu5i\\_HY-fOCZ8uRaA\\_aem\\_bTQwljiaYGp3NXPtEavhgQ](https://themind-circle.com/zhuhai-opera-house-stunning-island-structure-in-china/?fbclid=IwY2xjawGj4JhleHRuA2FlbQlxMAABHaZDufXB3bfpjJnRA5igshbPPo515cN6P009jV48M2qu5i_HY-fOCZ8uRaA_aem_bTQwljiaYGp3NXPtEavhgQ).  
**SQA has made every effort to trace the owners of copyright of this item and seek permissions. We are happy to discuss permission requirements and incorporate any missing acknowledgement. Please contact [question.papers@sqa.org.uk](mailto:question.papers@sqa.org.uk).**
- Section 2 Question 8 (Image on bottom left) – Image of “Zhuhai Opera House” is taken from <https://eu.traxon-ecue.com/project/zhuhai-grand-theatre/>.  
**SQA has made every effort to trace the owners of copyright of this item and seek permissions. We are happy to discuss permission requirements and incorporate any missing acknowledgement. Please contact [question.papers@sqa.org.uk](mailto:question.papers@sqa.org.uk).**
- Section 2 Question 8 (Image on bottom right) – Image of “Zhuhai Opera House” is taken from <https://www.archilovers.com/projects/233469/zhuhai-opera-house.html#images>.  
**SQA has made every effort to trace the owners of copyright of this item and seek permissions. We are happy to discuss permission requirements and incorporate any missing acknowledgement. Please contact [question.papers@sqa.org.uk](mailto:question.papers@sqa.org.uk).**
- Section 2 Question 9 Five images - “Beach LT Origami Kayak” (2021) by Oru Kayak.  
**SQA has made every effort to trace the owners of copyright of this item and seek permissions. We are happy to discuss permission requirements and incorporate any missing acknowledgement. Please contact [question.papers@sqa.org.uk](mailto:question.papers@sqa.org.uk).**
- Section 2 Question 10 Three images - “Victorian-Style Drop Earrings” (c.2023) by Grainne Morton. Reproduced by kind permission of Grainne Morton.
- Section 2 Question 11 Book cover - “Amelia Fang and the Lost Yeti Treasures” (2019) by Laura Ellen Anderson.  
**SQA has made every effort to trace the owners of copyright of this item and seek permissions. We are happy to discuss permission requirements and incorporate any missing acknowledgement. Please contact [question.papers@sqa.org.uk](mailto:question.papers@sqa.org.uk).**
- Section 2 Question 12 Image - “Fashion Shoes (17–18th century)” by unknown designer, France, is taken from the Metropolitan Museum website. Reproduced under CC0 1.0 Universal Licence.